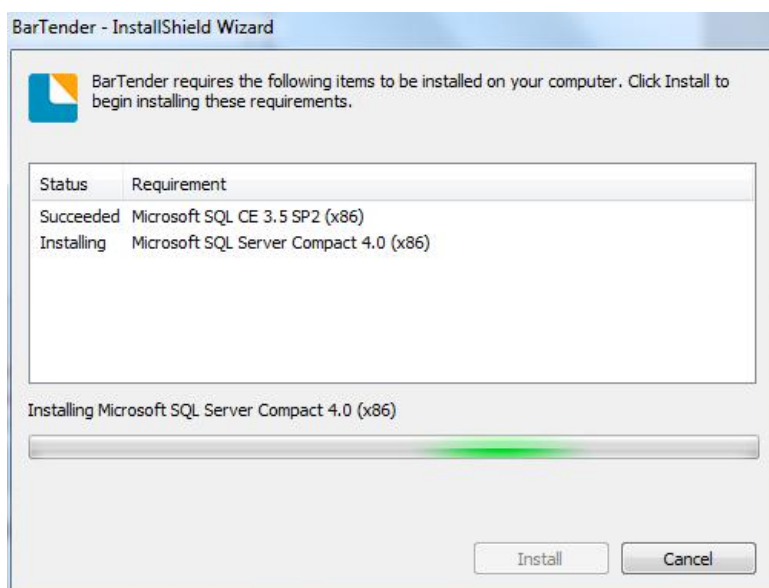
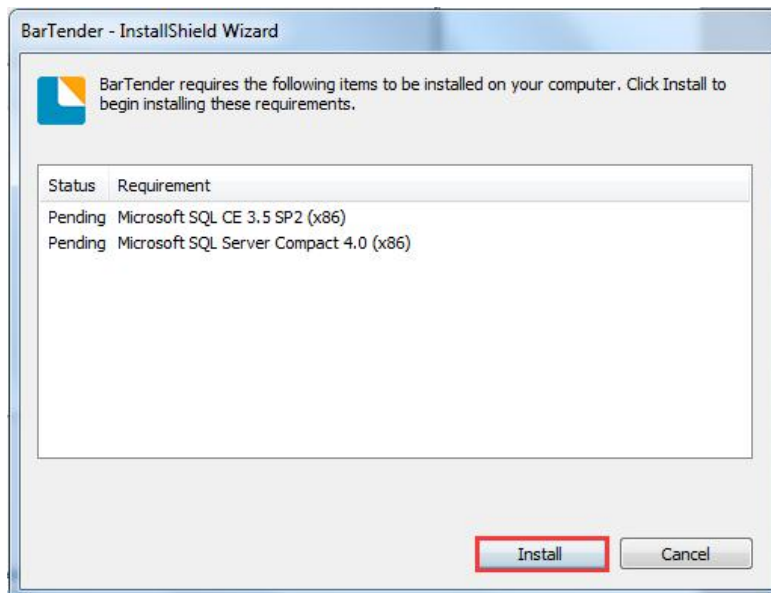
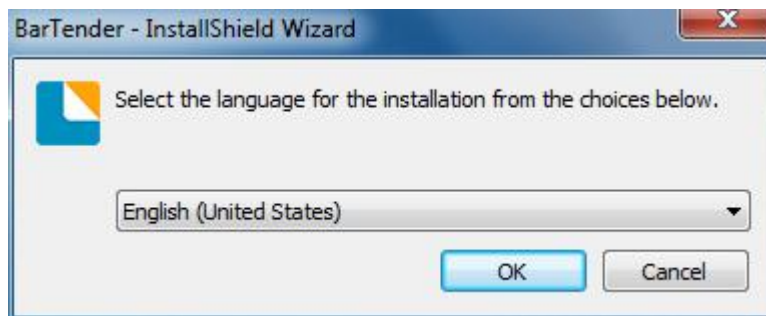


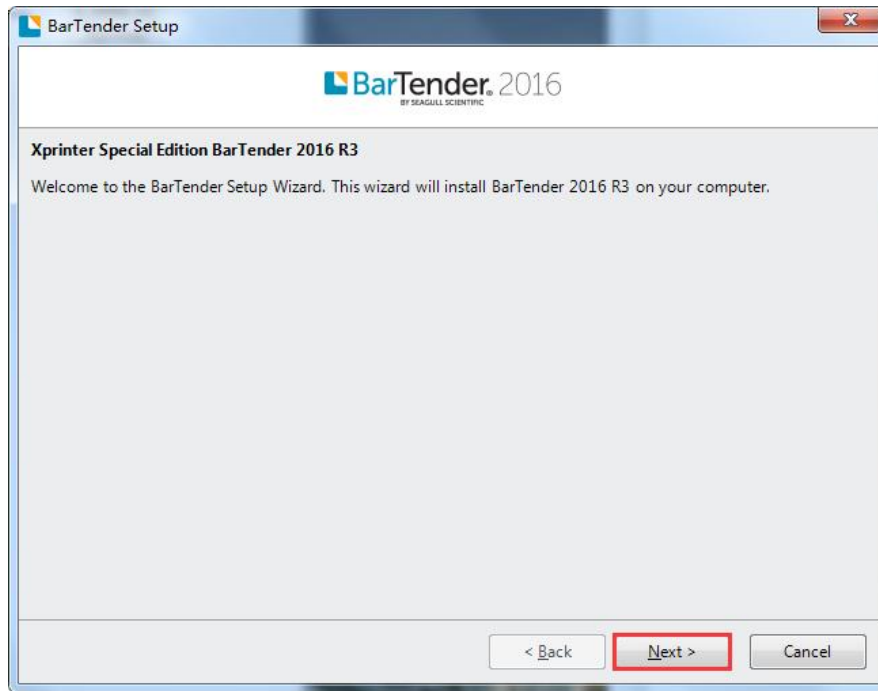
BarCode edit manual



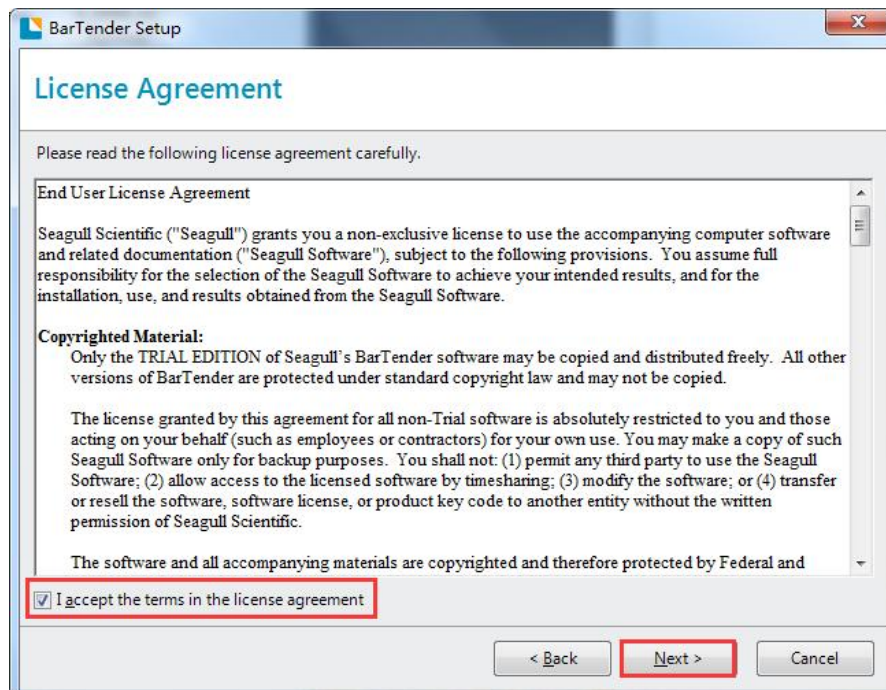
1、Open CD, double click icon to install barcode software:



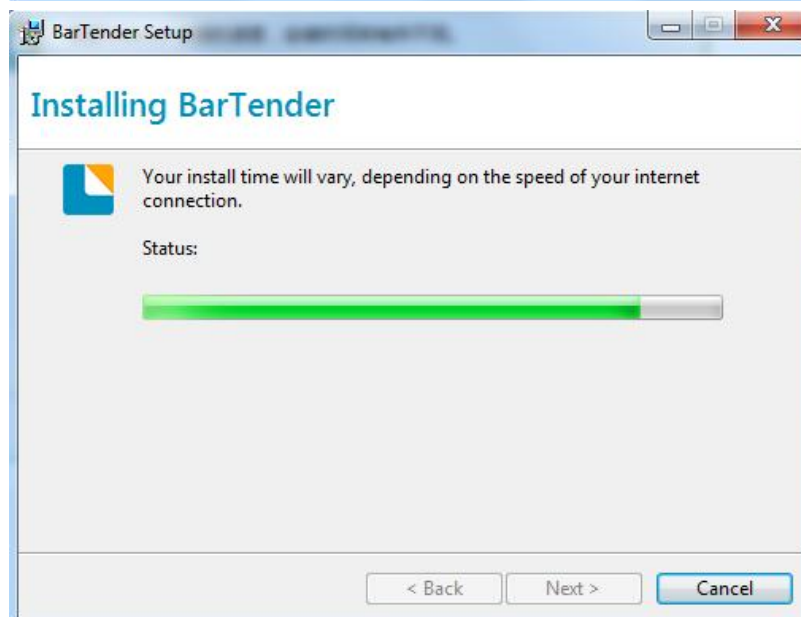
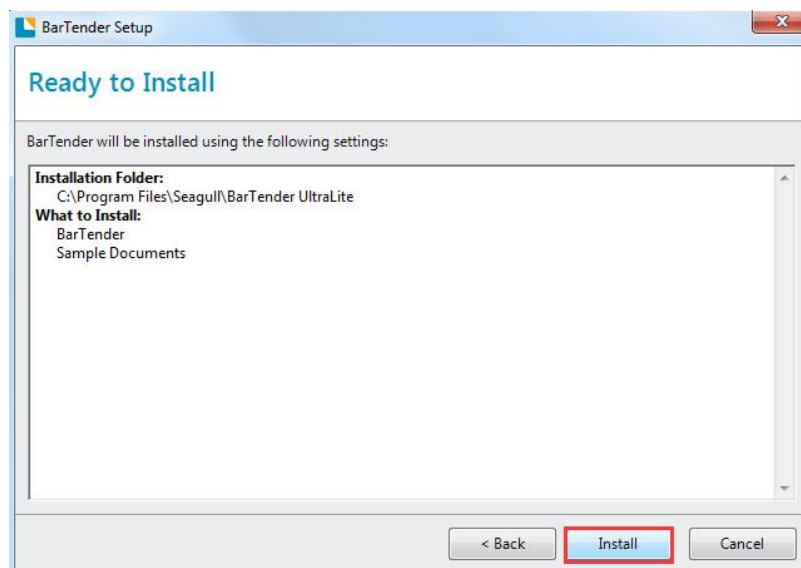
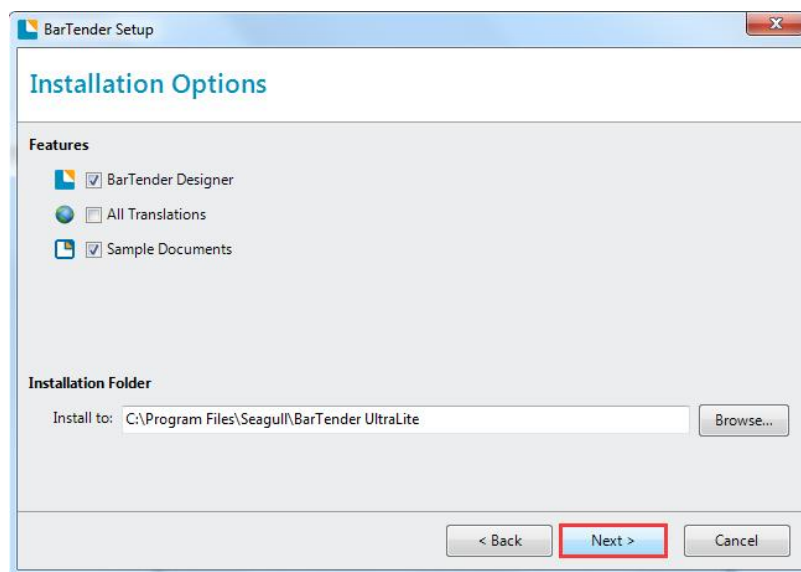
2、 Follow the setup wizard to the next step.

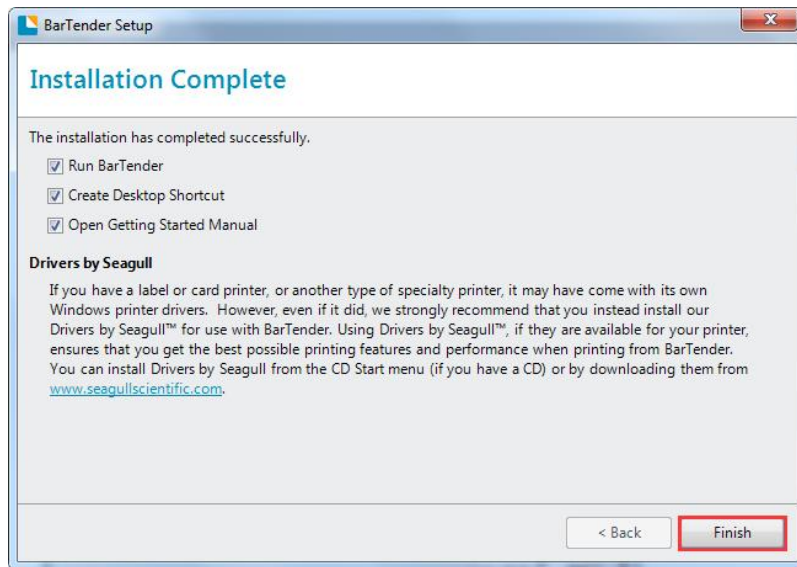


3、 Select “I accept the tems in the license agreement”, then click “Next”.

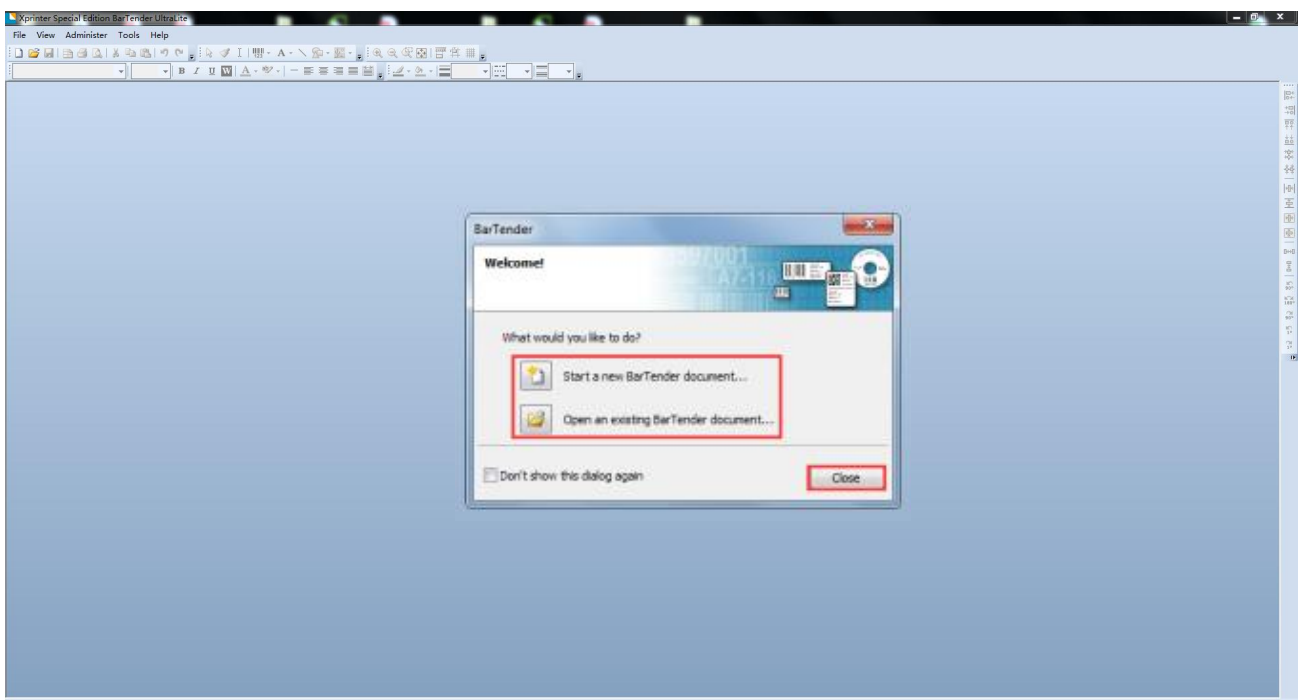
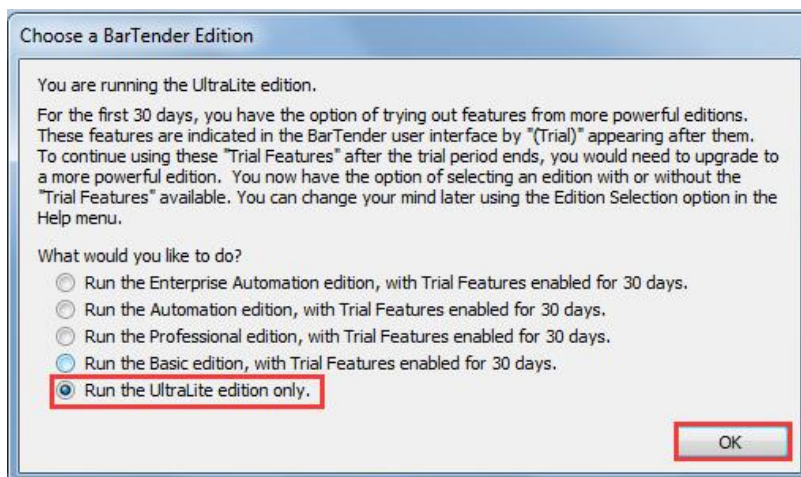


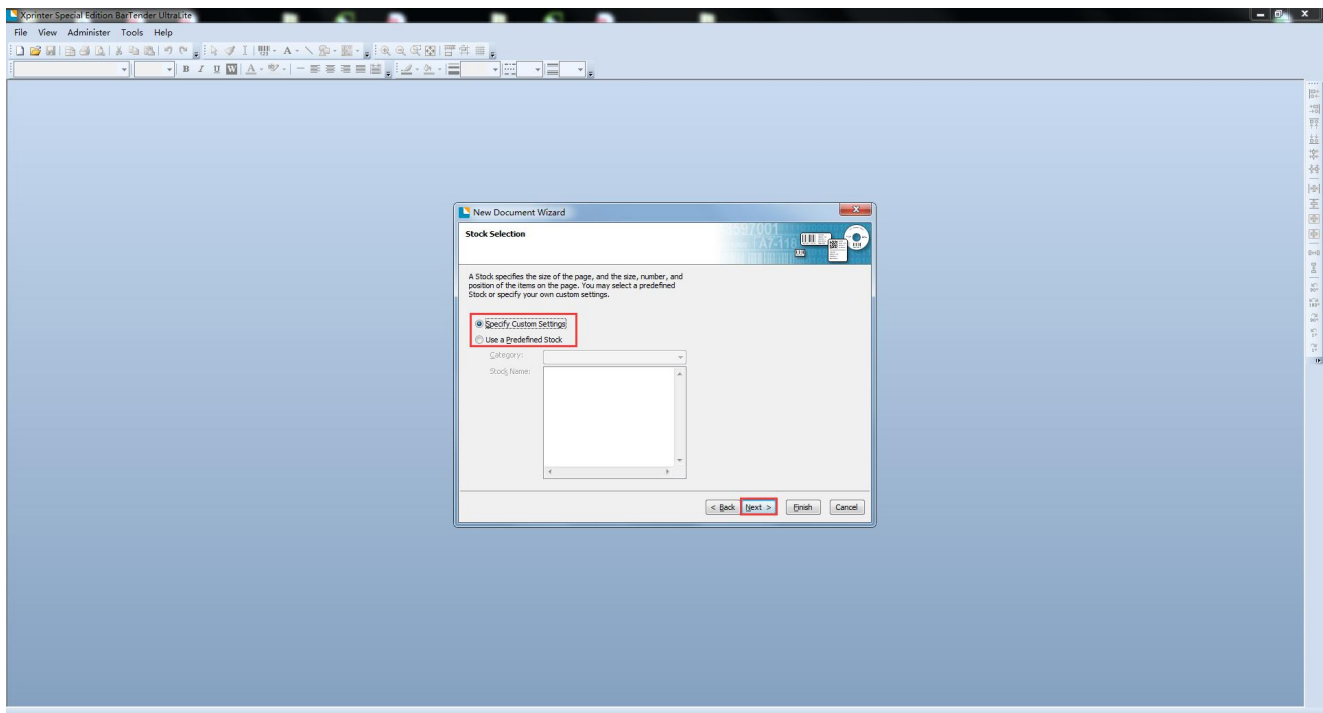
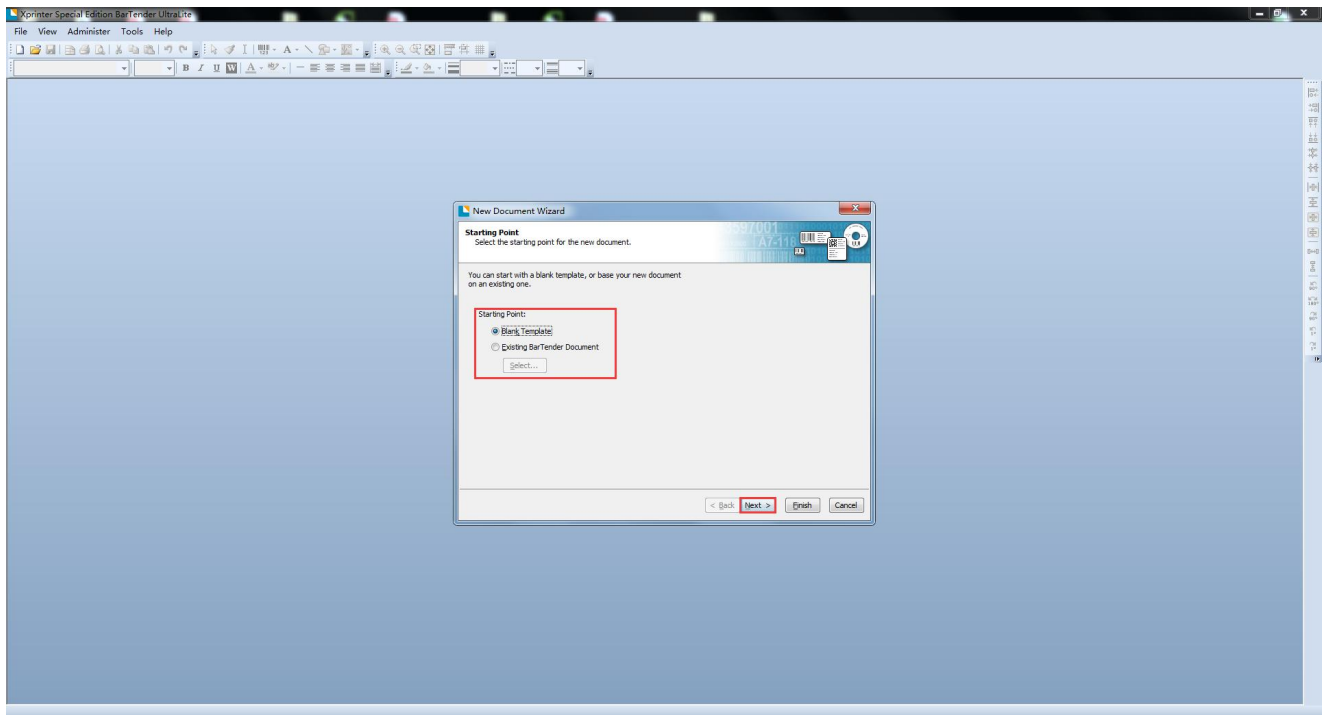
4、 Select the software installation path (Recommended default), then click next.

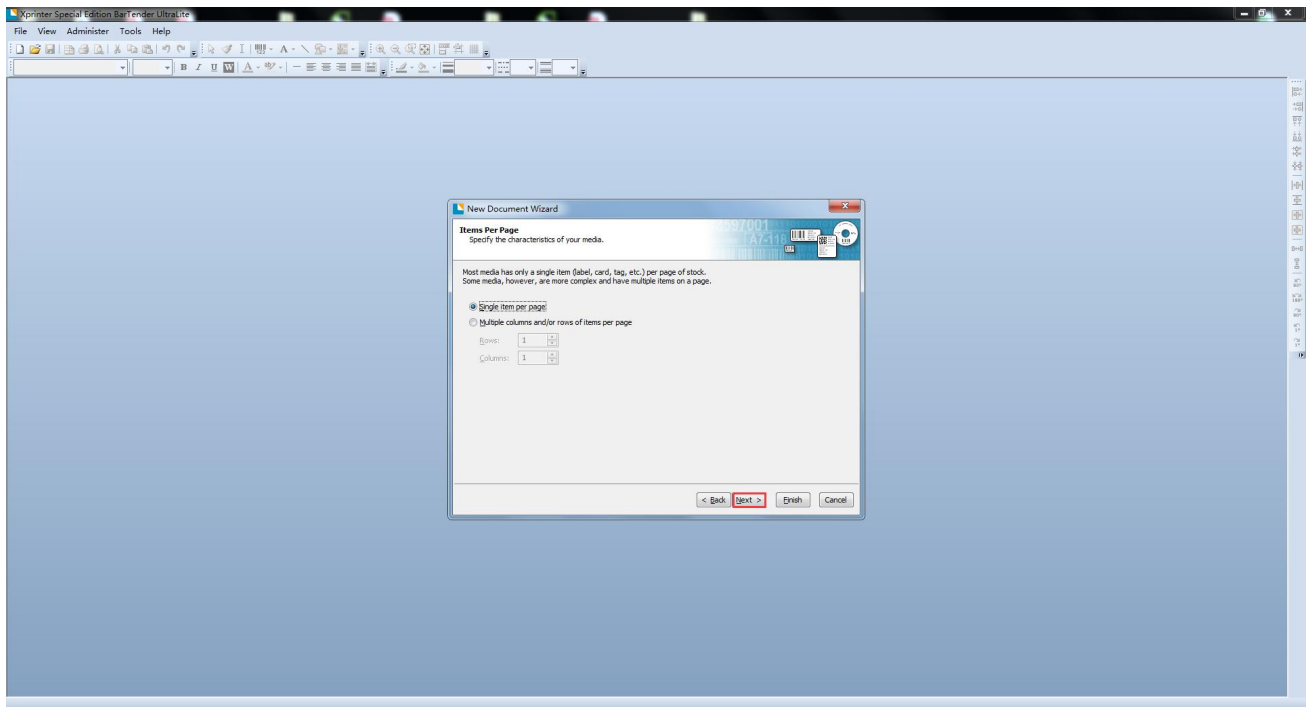




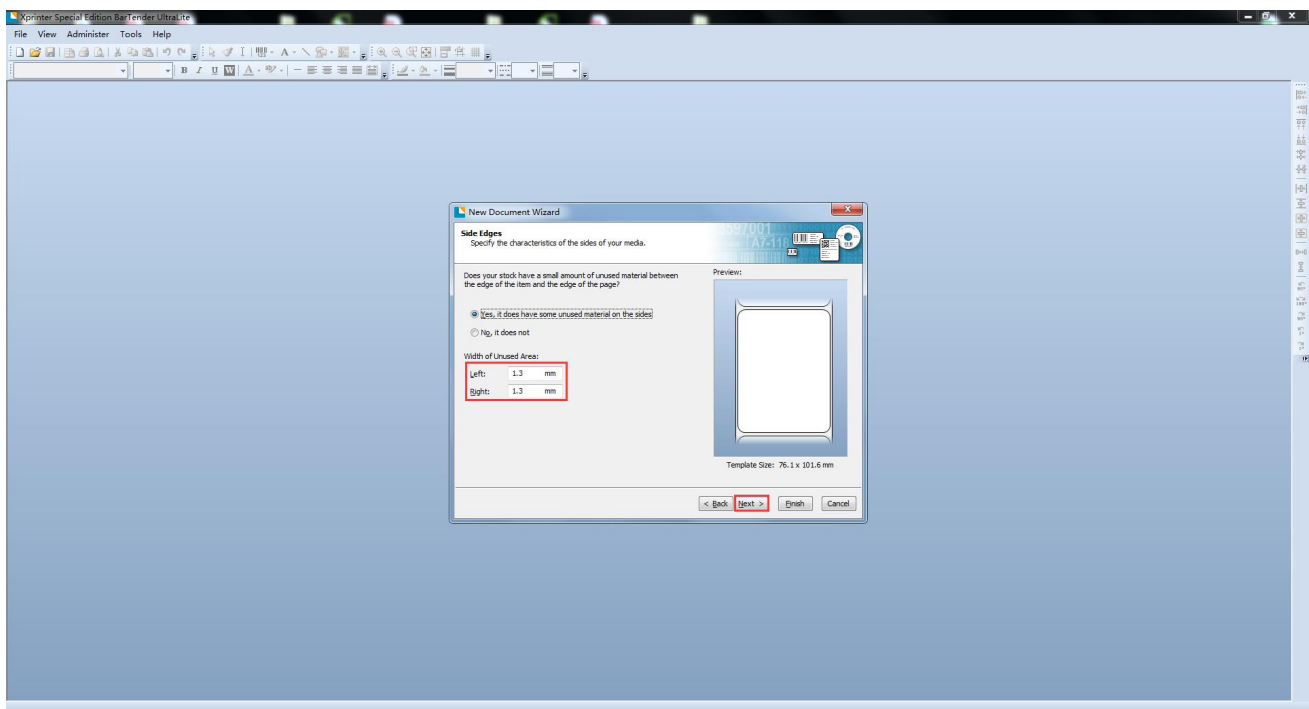
5、After finished, run the software and starting a new Blank Template.

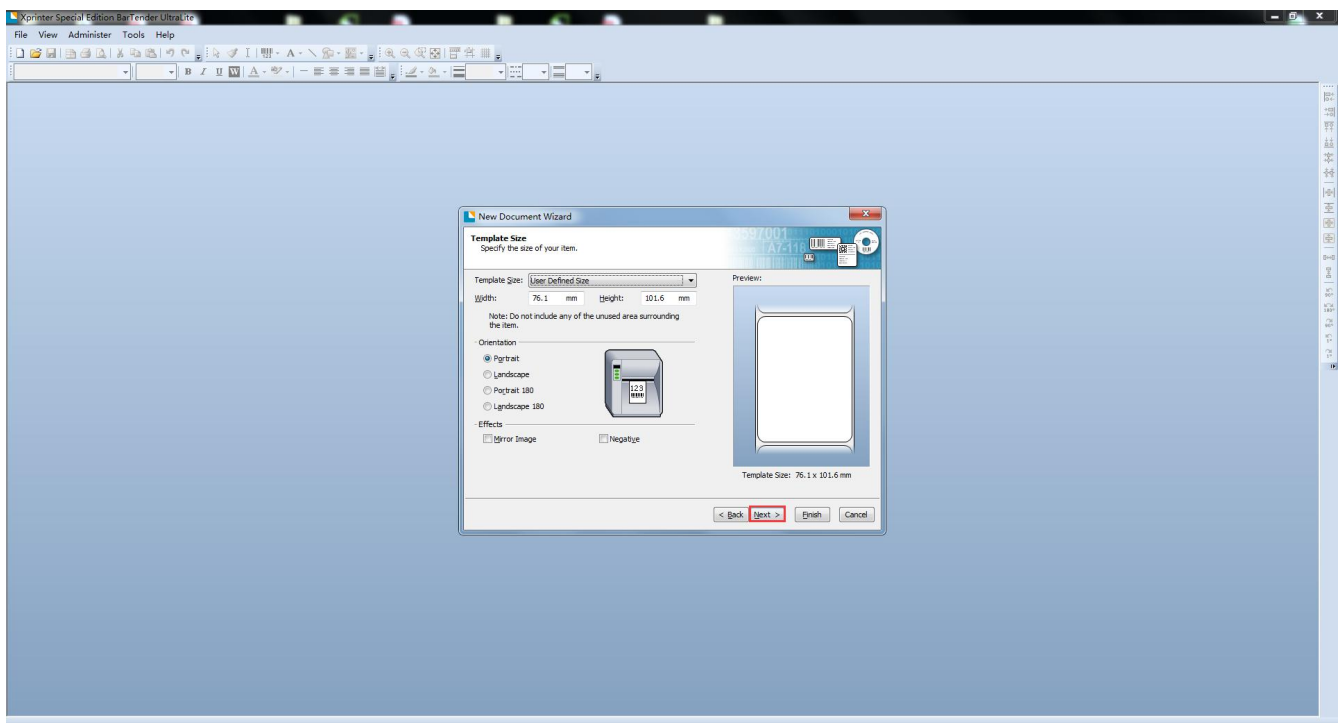
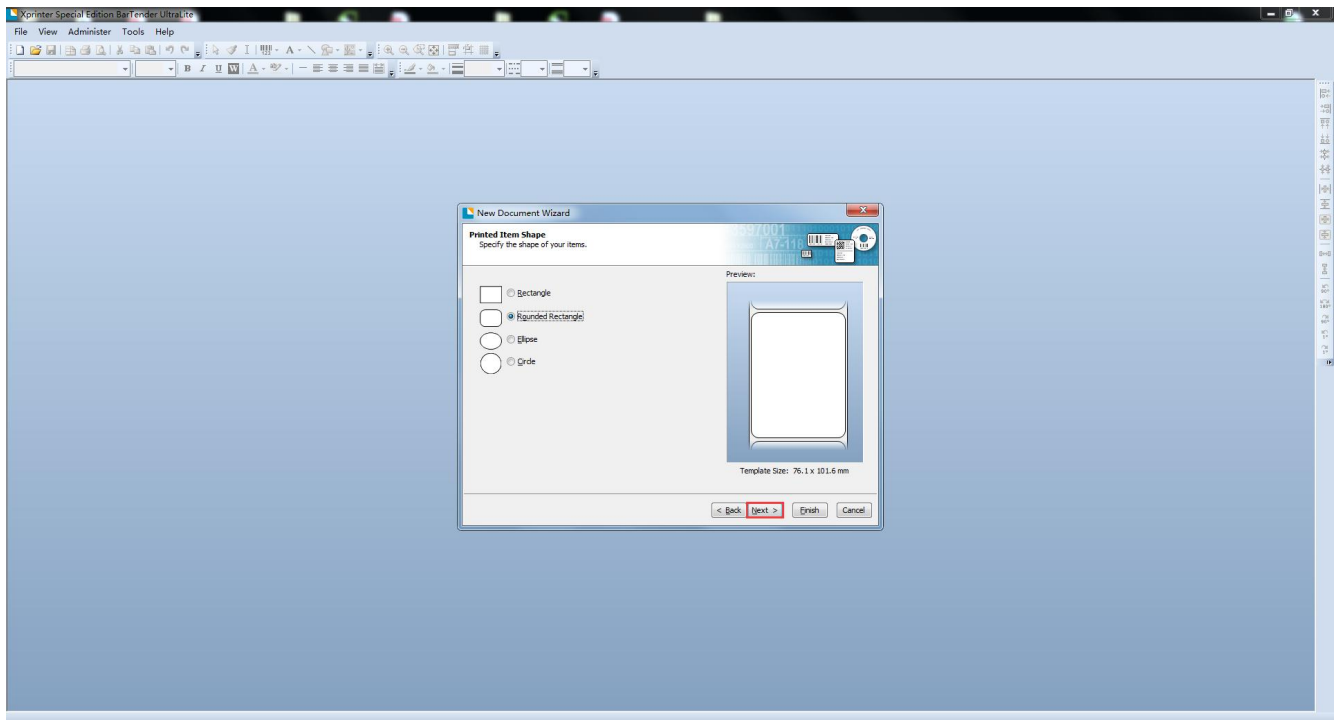


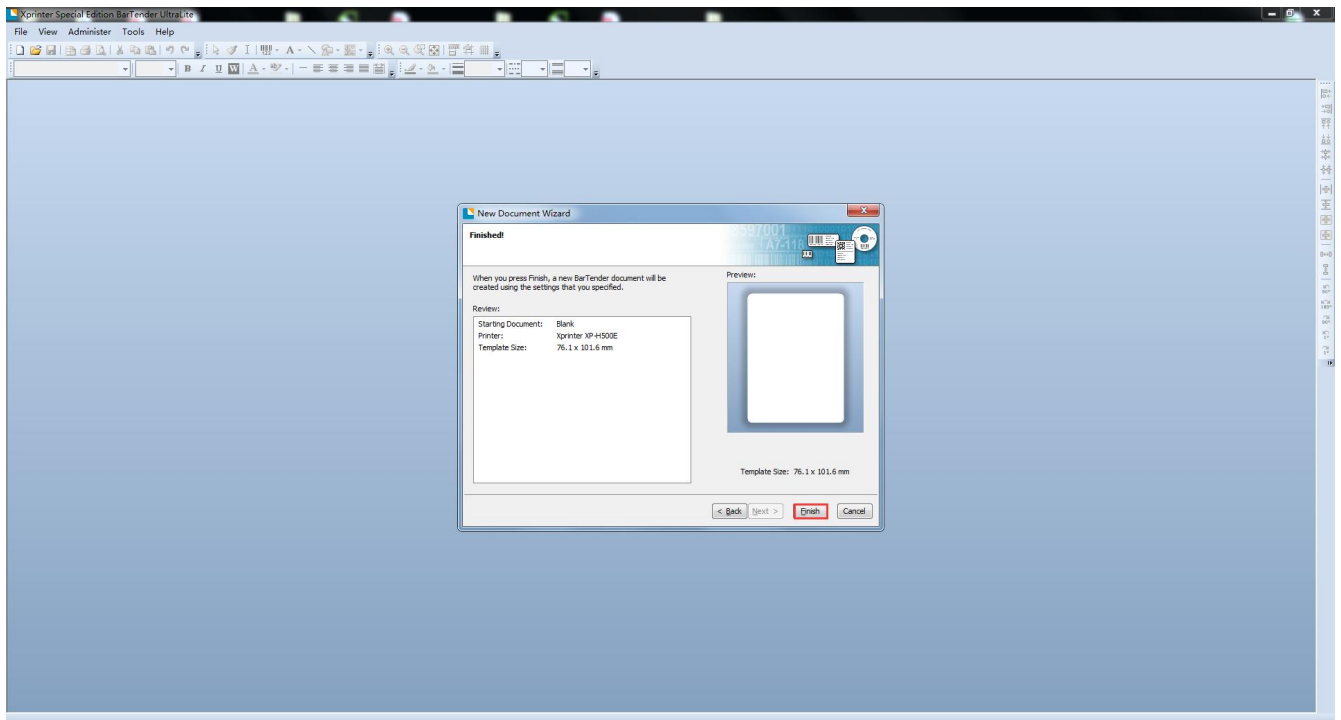
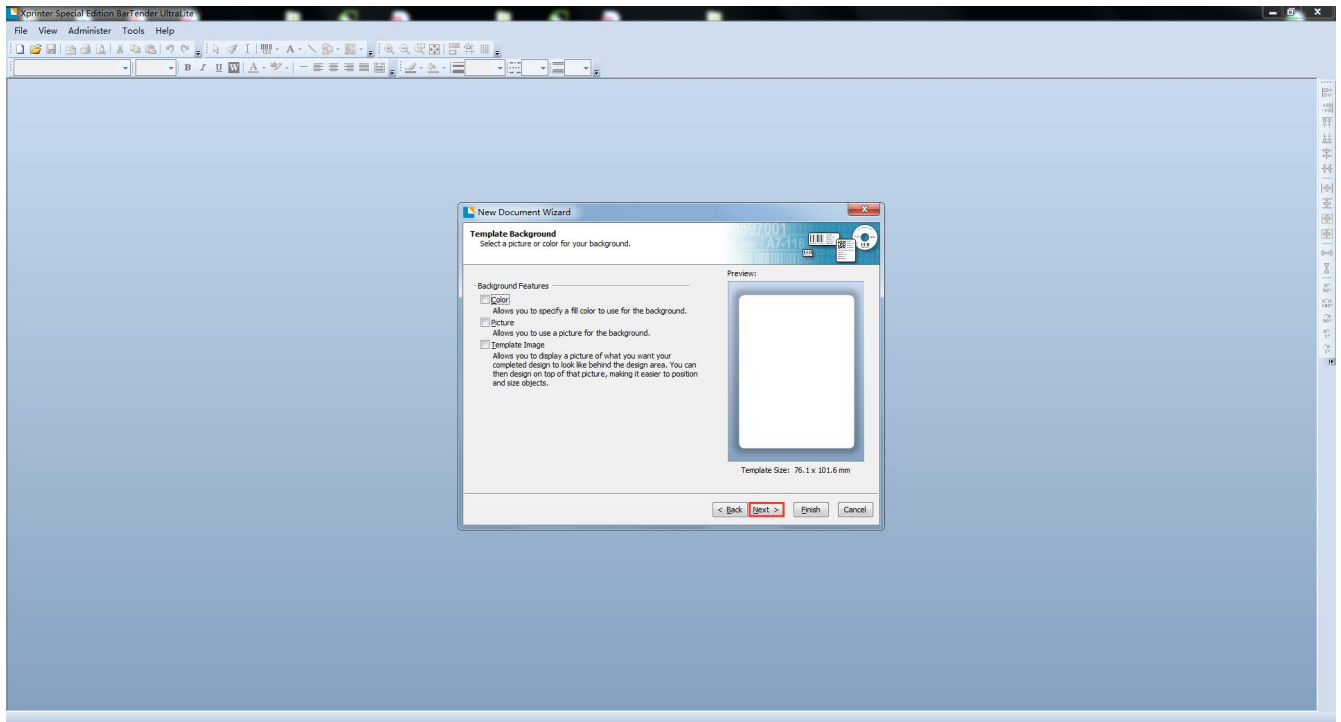




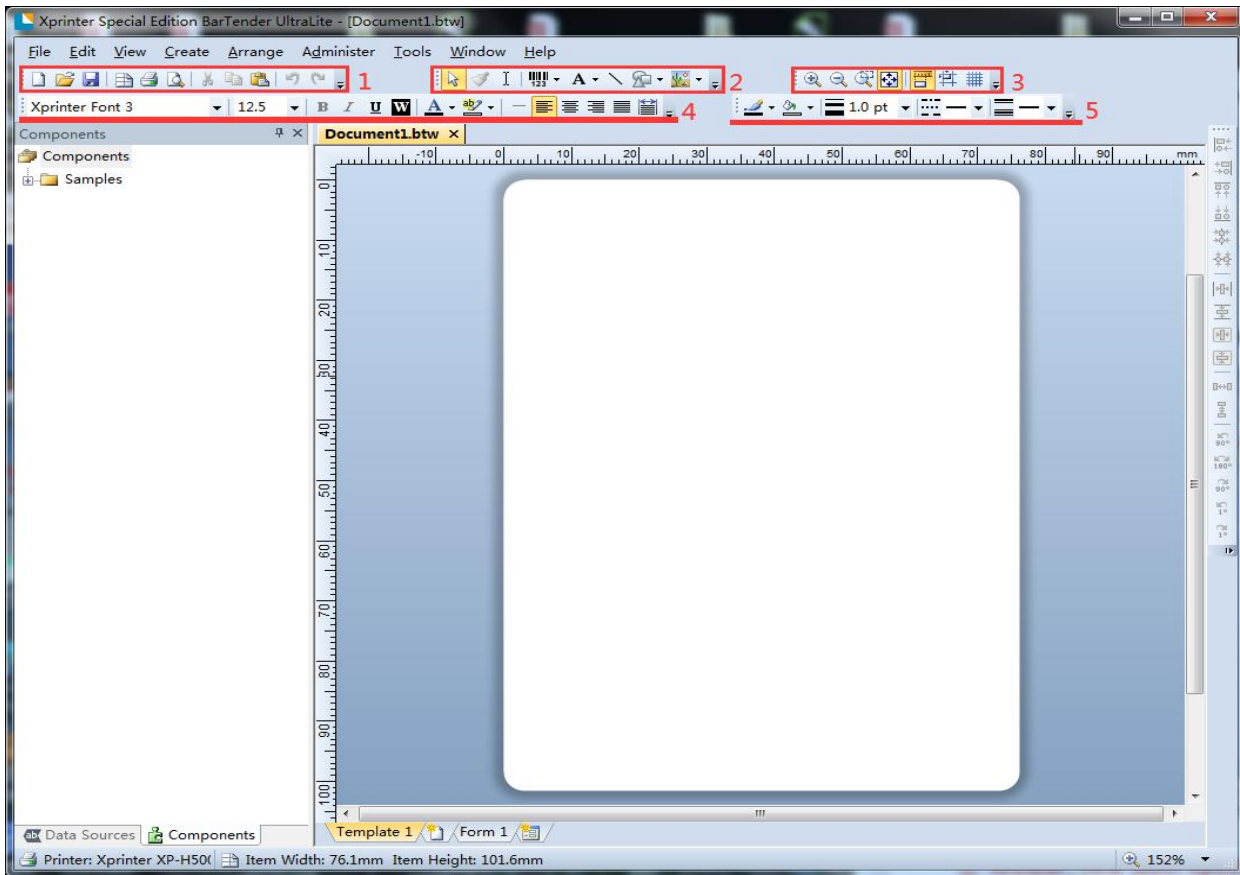
Note: The left and right margins are based on the user's label







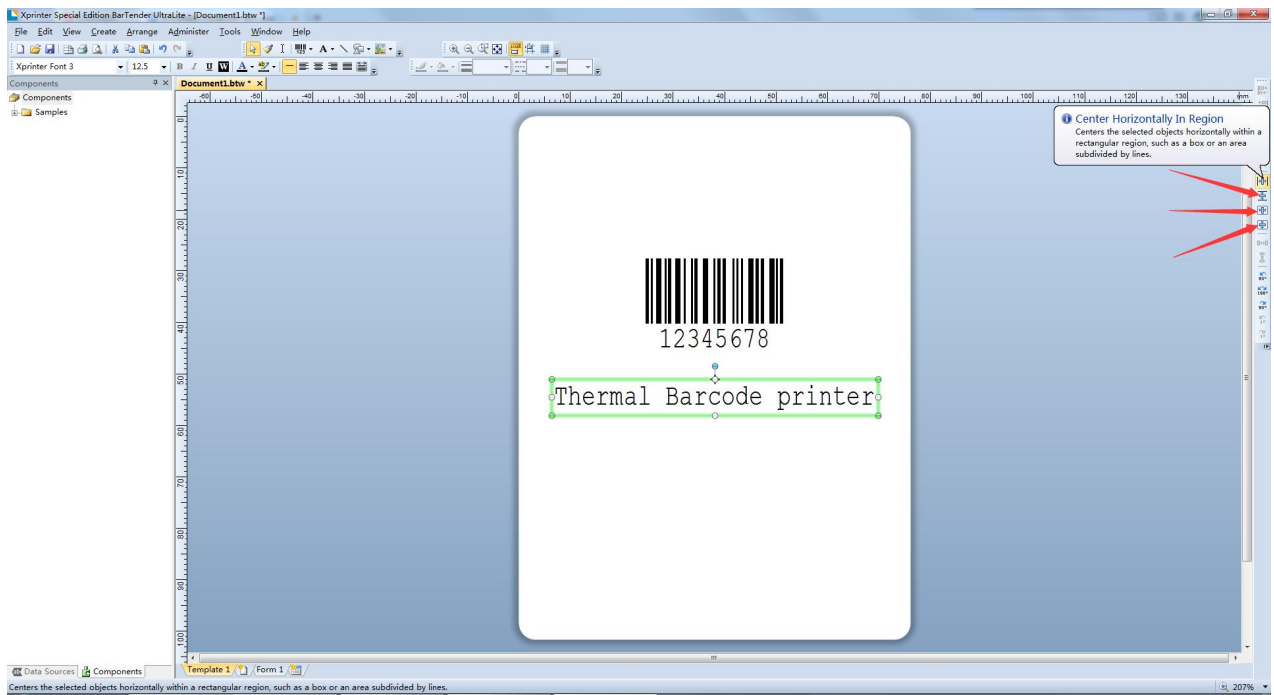
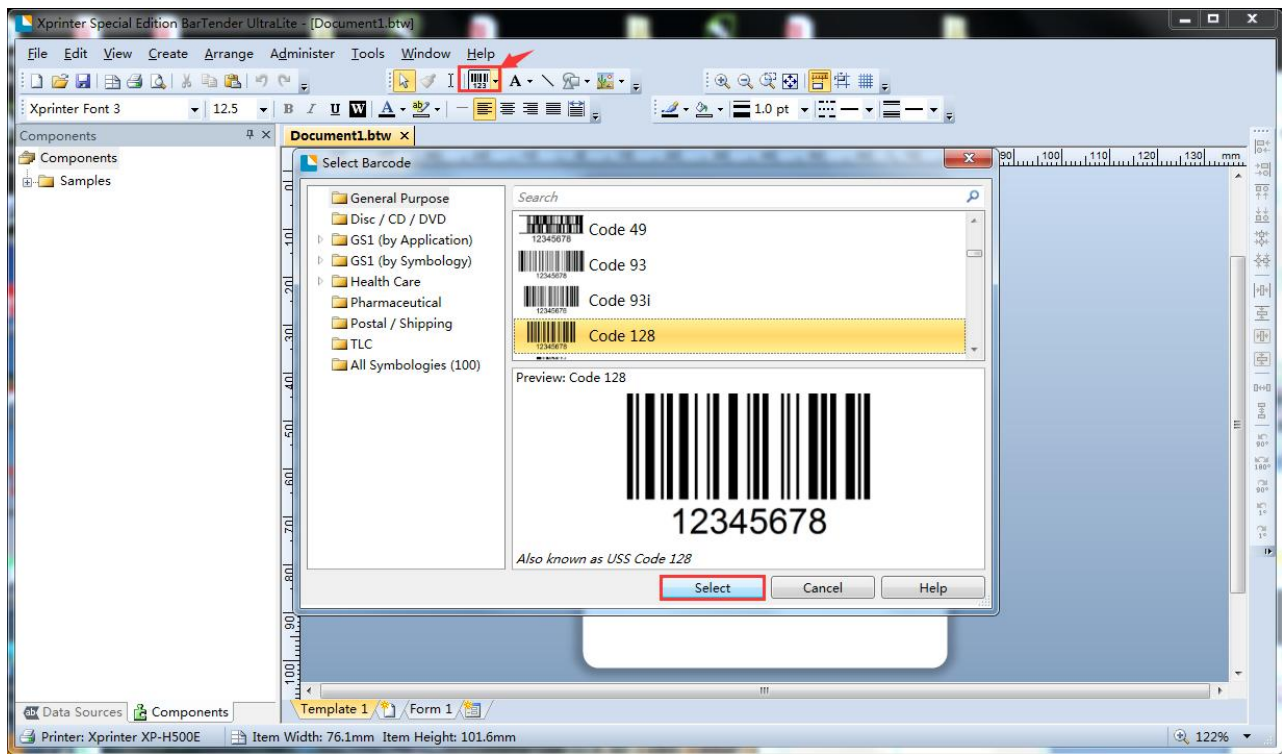
6、 After create the label,it will go in the editor window.

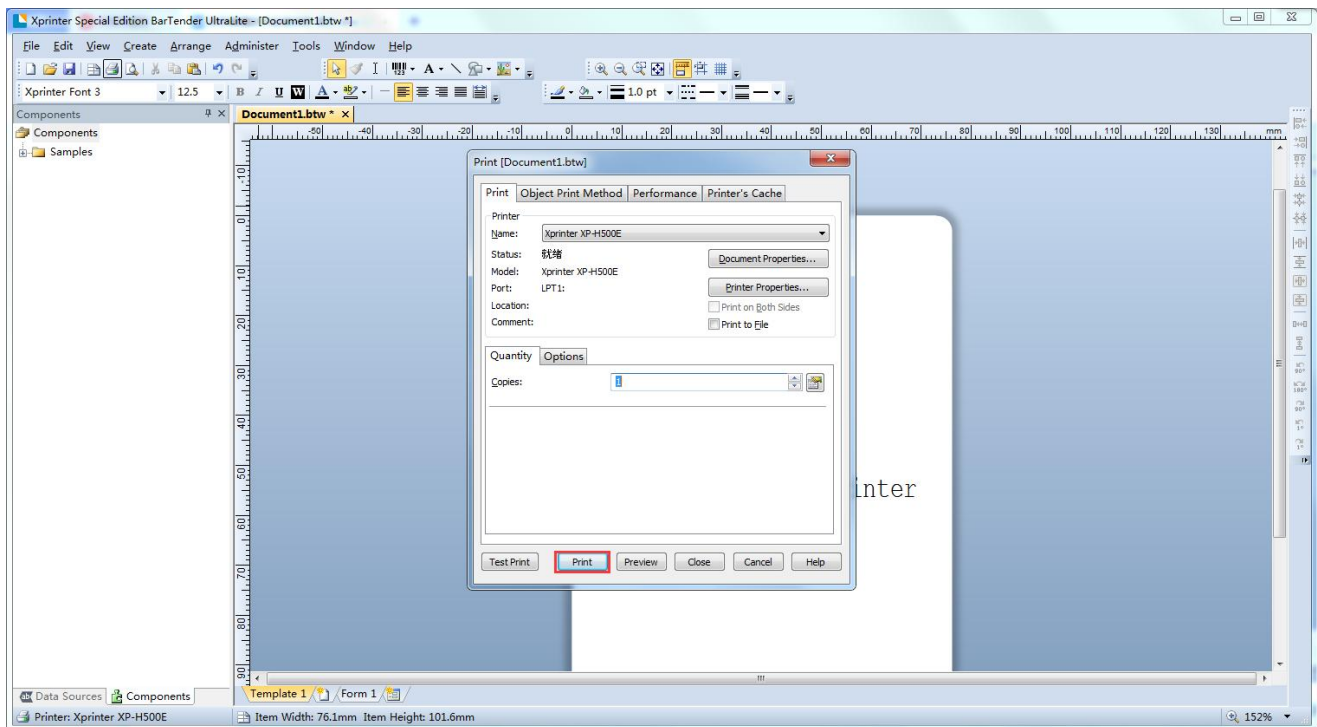
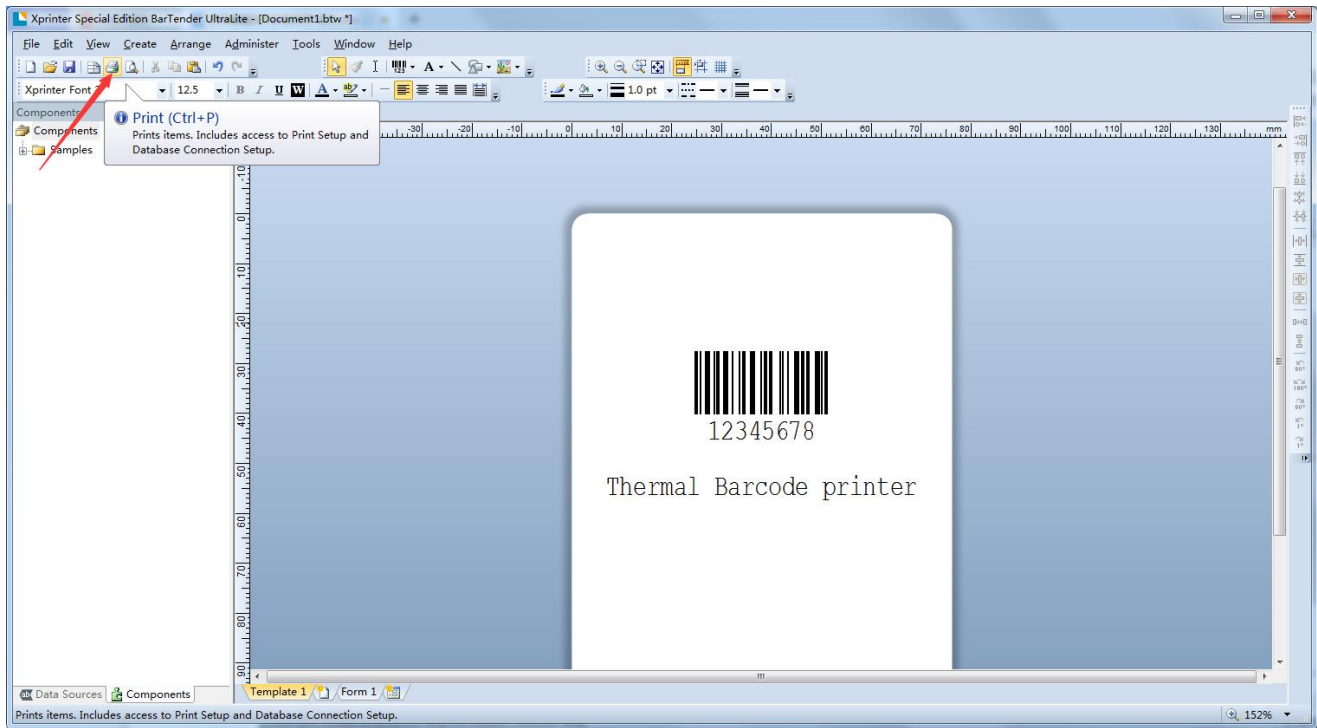


- ① toolbar: new label specification, save, print, etc
- ② object: bar code, text, selection and other shortcut buttons
- ③ view: zoom in, zoom out, center window and other buttons
- ④ text: font type, size selection, alignment, etc
- ⑤ line and shape: line size, fill, etc

7、 Print barcode and text demo

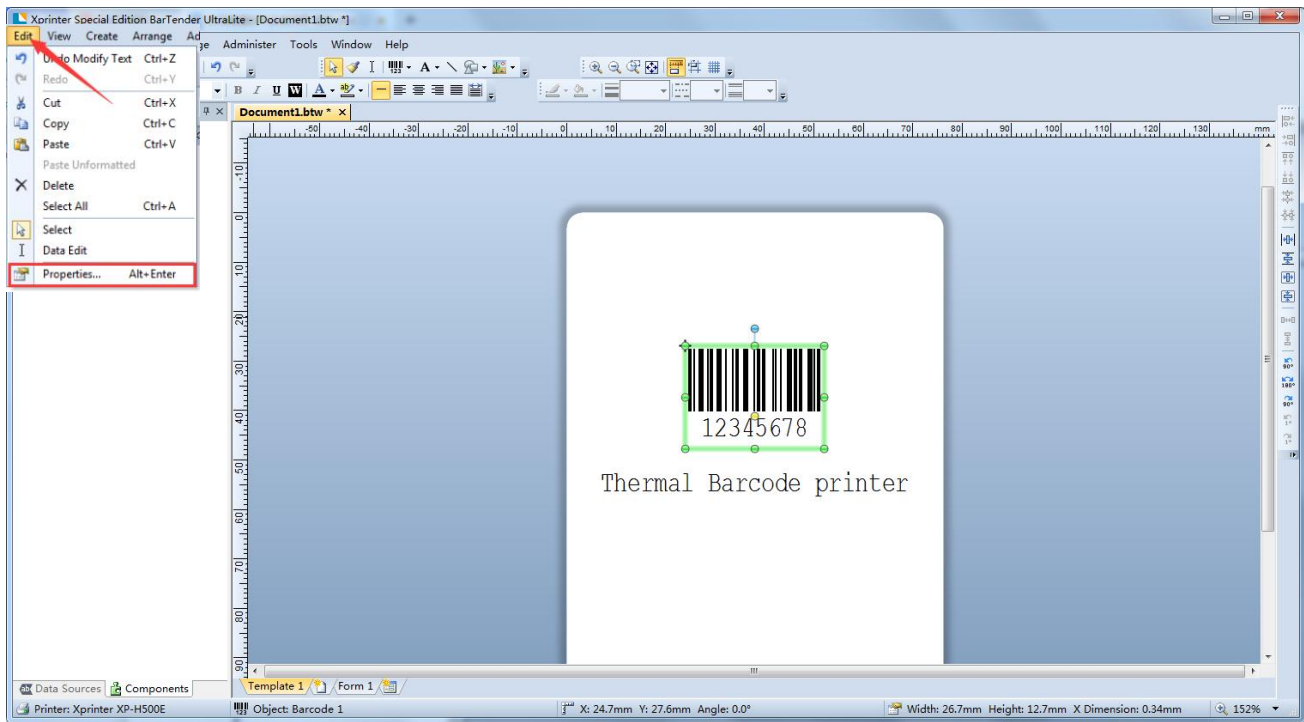
7. 1 :click “barcode” → more barcode, select the barcode type.



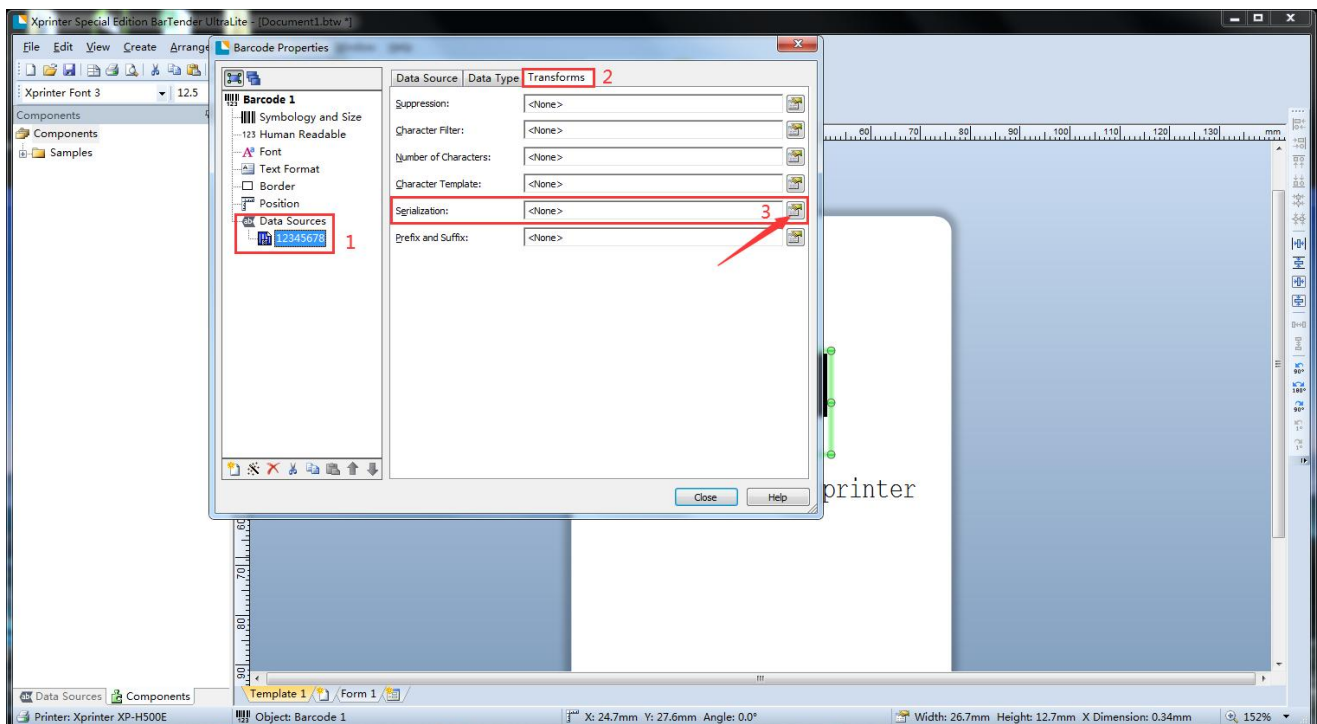


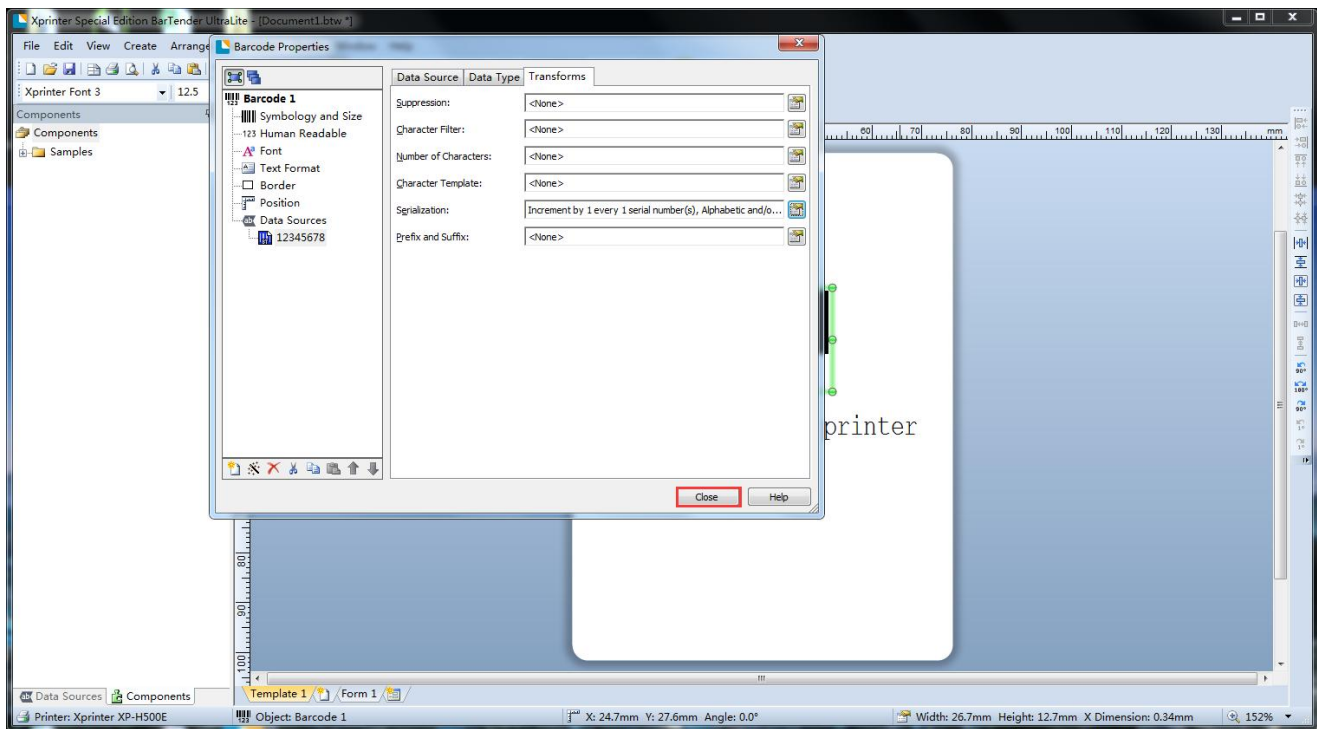
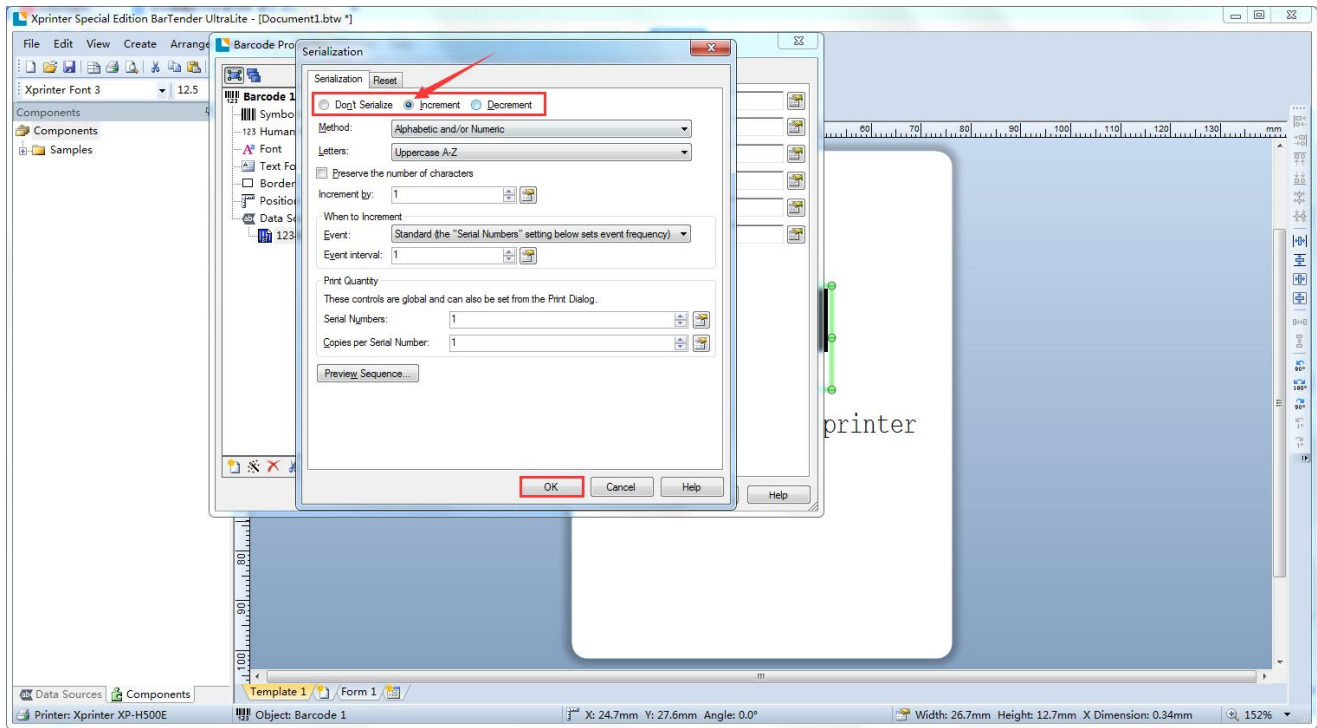
8、Barcode sequence printing method

8.1. Select barcode, click Edit → Properties



8. 2. Data Sources → Transforms → serialization





8. 3. click icon "print" → input number of serial numbers

